

RHYTHM SECTION
JAZZ BALLAD (BRUSHES)

MON COEUR

CHRIS MALLEY
©1/18/2019

♩=60

D-7 guitar cadenza **D-7** until cue

Musical staff with bass clef, 4/4 time signature. It starts with a guitar cadenza marked 'D-7' and a bracket. The main melody begins with a 'D-7' chord and continues with notes: G2, A2, B2, C3, D3, E3, F3, G3, A3, B3, C4, D4, E4, F4, G4, A4, B4, C5. The staff ends with a double bar line and a '2' above it, indicating a second ending.

(A) **D-7** **C** **BbMA7** **D-7** **C** **BbMA7**

Musical staff with bass clef, 4/4 time signature, and empty space for guitar accompaniment. It starts with a double bar line and a '6' below it.

G-7 **F** **Eb** **BbMA7** **A7**

Musical staff with bass clef, 4/4 time signature, and empty space for guitar accompaniment. It starts with a double bar line and a '10' below it.

(B) **F-7** **Eb** **Db** **F-7** **Eb** **Db** **G-7** **F** **Eb**

Musical staff with bass clef, 4/4 time signature, and empty space for guitar accompaniment. It starts with a double bar line and a '14' below it.

D-7

Musical staff with bass clef, 4/4 time signature. It starts with a guitar cadenza marked 'D-7' and a bracket. The main melody begins with a 'D-7' chord and continues with notes: G2, A2, B2, C3, D3, E3, F3, G3, A3, B3, C4, D4, E4, F4, G4, A4, B4, C5. The staff ends with a double bar line and a '2' above it, indicating a second ending.

(A) **D-7** **C** **BbMA7** **D-7** **C** **BbMA7**

Musical staff with bass clef, 4/4 time signature, and empty space for guitar accompaniment. It starts with a double bar line and a '24' below it.

G-7 **F** **Eb** **BbMA7** **A7**

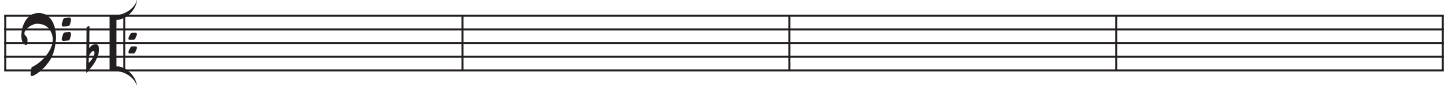
Musical staff with bass clef, 4/4 time signature, and empty space for guitar accompaniment. It starts with a double bar line and a '28' below it.

D-7

Musical staff with bass clef, 4/4 time signature. It starts with a guitar cadenza marked 'D-7' and a bracket. The main melody begins with a 'D-7' chord and continues with notes: G2, A2, B2, C3, D3, E3, F3, G3, A3, B3, C4, D4, E4, F4, G4, A4, B4, C5. The staff ends with a double bar line and a '2' above it, indicating a second ending.

SOLOS

D-7 C BbMA7 D-7 C BbMA7



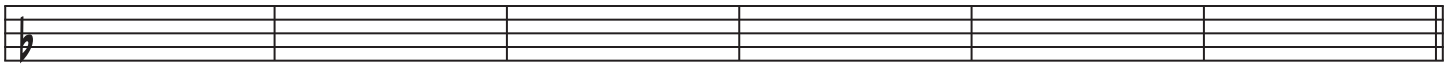
36

G-7 F Eb BbMA7 A7



40

F-7 Eb Db F-7 Eb Db G-7 F Eb



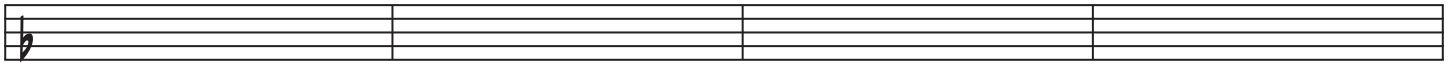
44

D-7 until cue



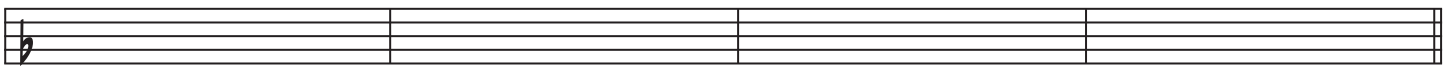
50

A D-7 C BbMA7 D-7 C BbMA7



54

G-7 F Eb BbMA7 A7



58

B F-7 Eb Db F-7 Eb Db G-7 F Eb



62

D-7 4x D-7



68