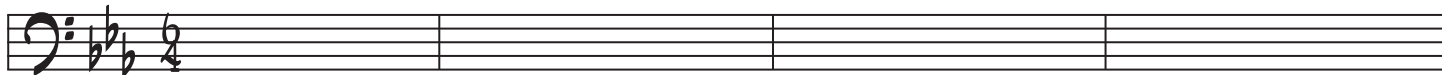


RHYTHM SECTION  
GOSPEL BALLAD / CIRCUS  
♩=120

# MILKY

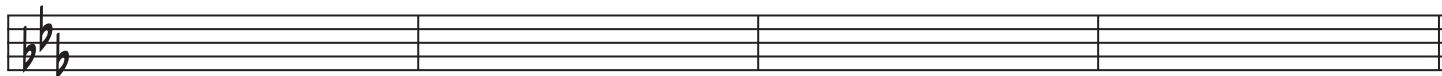
CHRIS MALLEY  
©1/16/2017

C- Eb7 F7 Db7



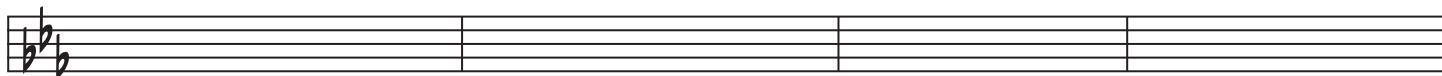
*mf*

C- Eb7 Ab7 Db7



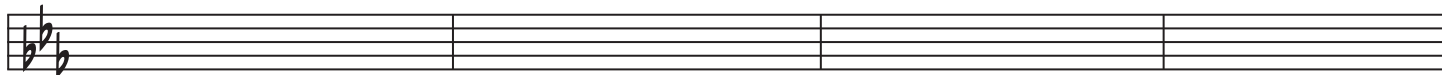
5

5/8 [A] C- Eb7 F7 Db7



9

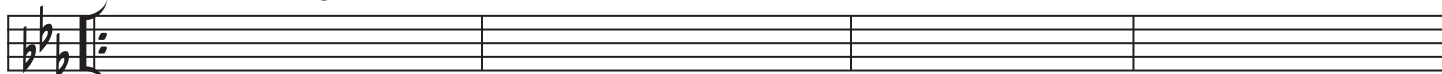
C- Eb7 Ab7 Db7



13

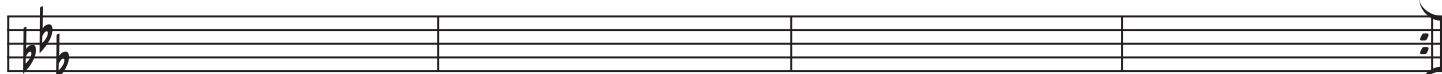
[A] C- 1. add harmony Eb7 F7 Db7

2. add organ



17

C- Eb7 Ab7 Db7



21

C- drum fill



25

{ FINE }

Release the clowns!

8 C- D D/F#

Musical staff 1 (measures 27-30) with notes and rests.

27 Ab6 # Ab7 Csus4 C

Musical staff 2 (measures 31-34) with notes and rests.

31 Ab7 D D/F#

Musical staff 3 (measures 35-38) with notes and rests.

35 F F/A G7sus4 G7

Musical staff 4 (measures 39-42) with notes and rests.

39 C-

Musical staff 5 (measures 43-44) with notes and rests.

43 SOLO C- Eb7 F7 Db7

Musical staff 6 (measures 45-48) with notes and rests.

45 C- Eb7 Ab7 Db7

Musical staff 7 (measures 49-52) with notes and rests.

49 (D.S. AL FINE) no repeats