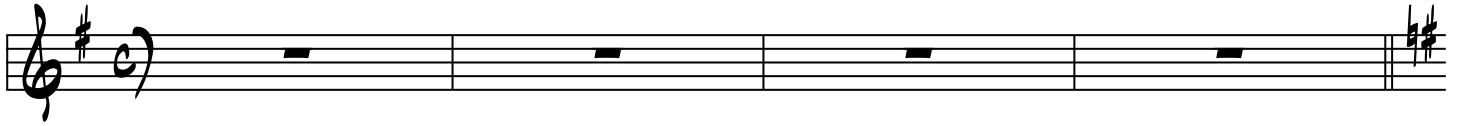


KEYS
FUSION
♩=140

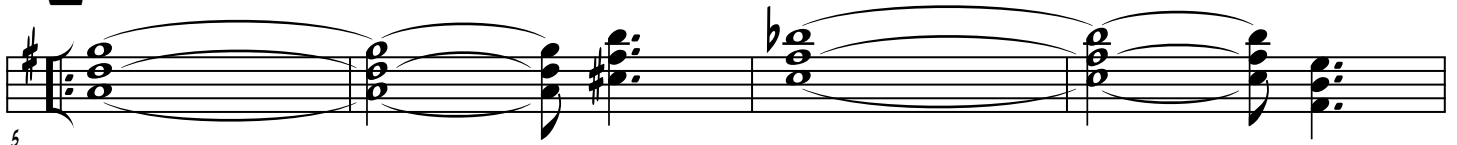
FRACTAL PIZZA

- CHRIS MALLEY
© 1/10/2014

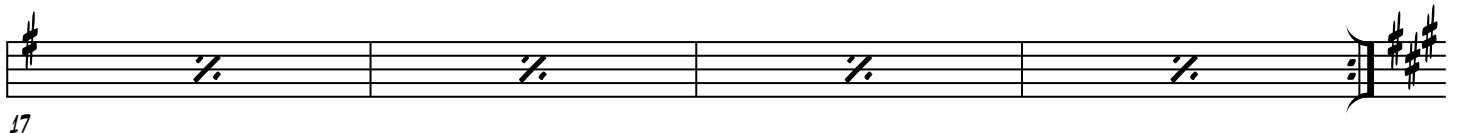
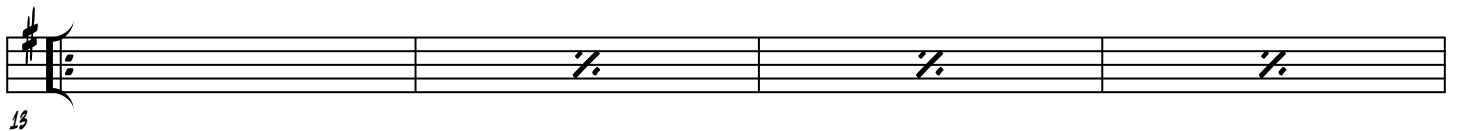
drum intro



5 **A** E-7 (digital piano)



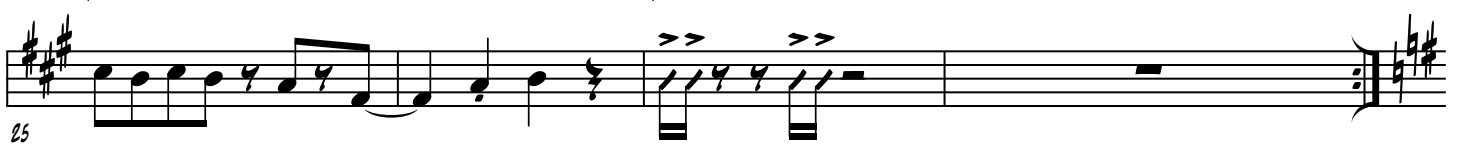
13 **B** E-7



21 **C** F#-13 (organ)



25 F#-13 F#-13



B E-7

29

33

E7(#9) **FINE** drum fill

37

DRUM SOLO - 8 -

39

SOLOS E-7 (like section B) - UNTIL CUE -

40

F#-13 (like section C) - 16 - until cue

41

(D.S. AL FINE)
take all repeats

FRACTAL PIZZA : KEYS