

# DEEP WATER

E-13 bass & drums

E-13

until cue



**A** E-13



E-13

FMA7

BbMA7

E-13

tutti



**B** A-7

FMA7

BbMA9

EbMA7

AbMA9

DbMA7



B-7

GMA7

CMa9

FMA7

BbMA9



GMA9

FMA9

GMA9

FMA9



**A** E-13



E-13

FMA7

BbMA7

E-13

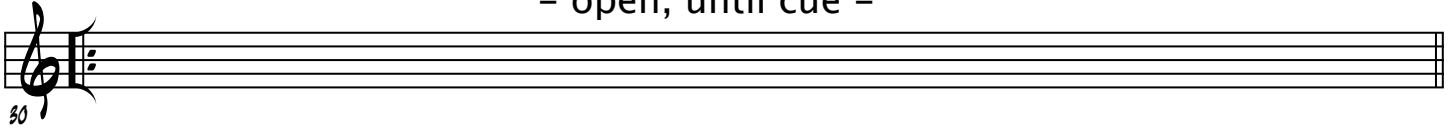
tutti



# SOLOS

E-13

- open, until cue -



A-7

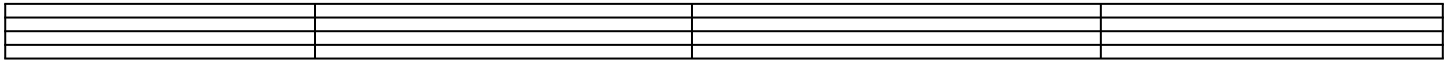
FMA7

BbMA79

EbMA77

AbMA79

DbMA77



31

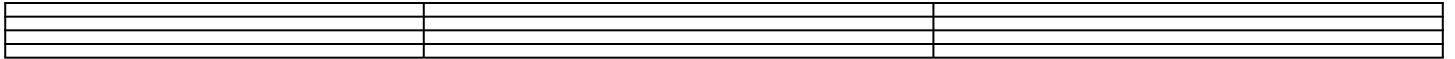
B-7

GMA77

CMa79

FMA77

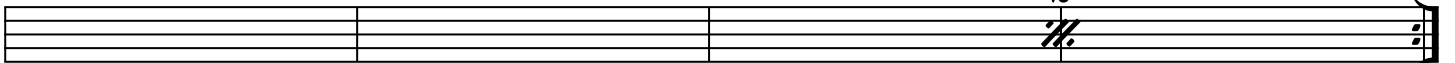
BbMA79



35

GMA79

FMA79



(D.C. AL CODA)

take repeats



E-13

drums continue

